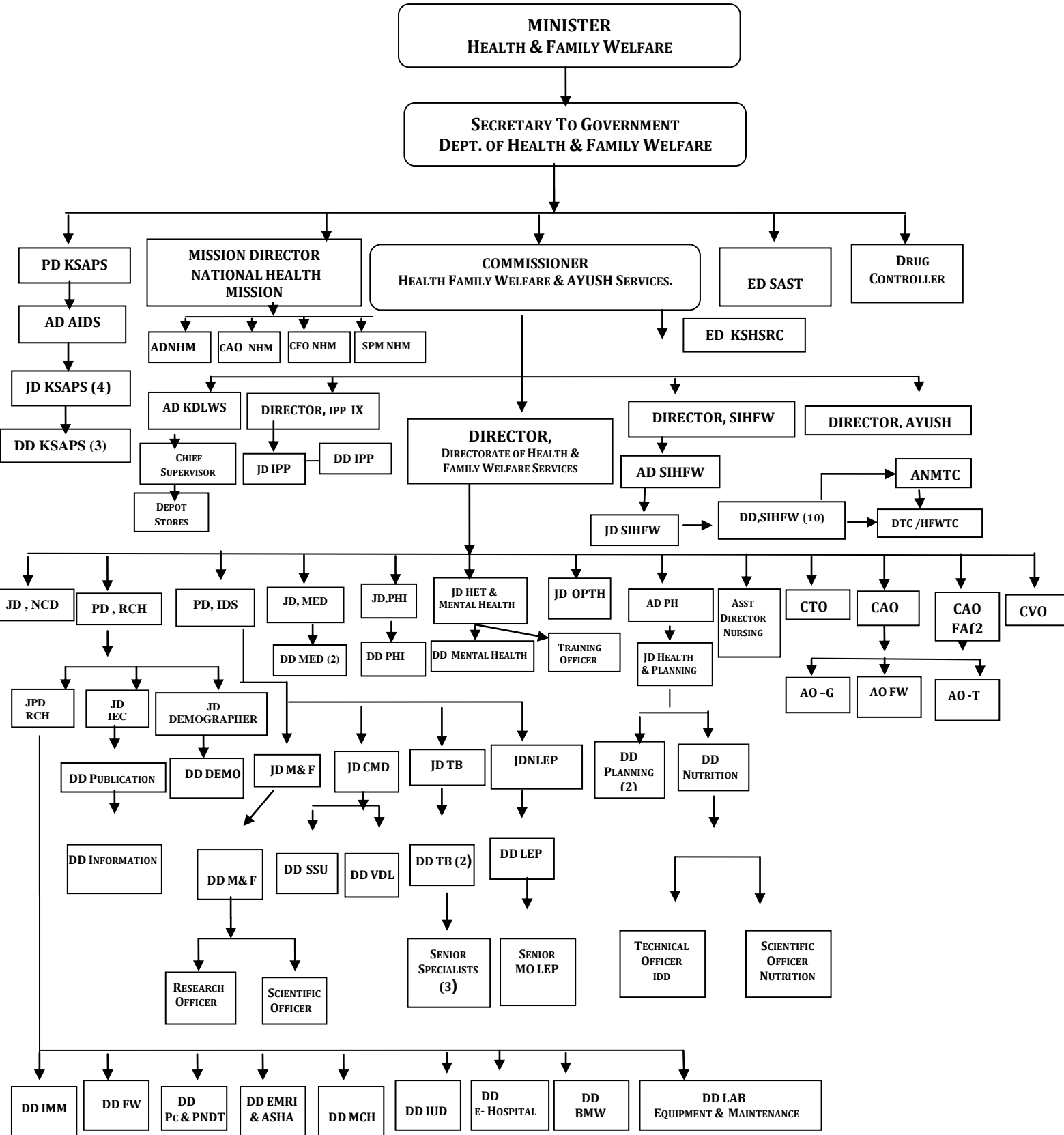
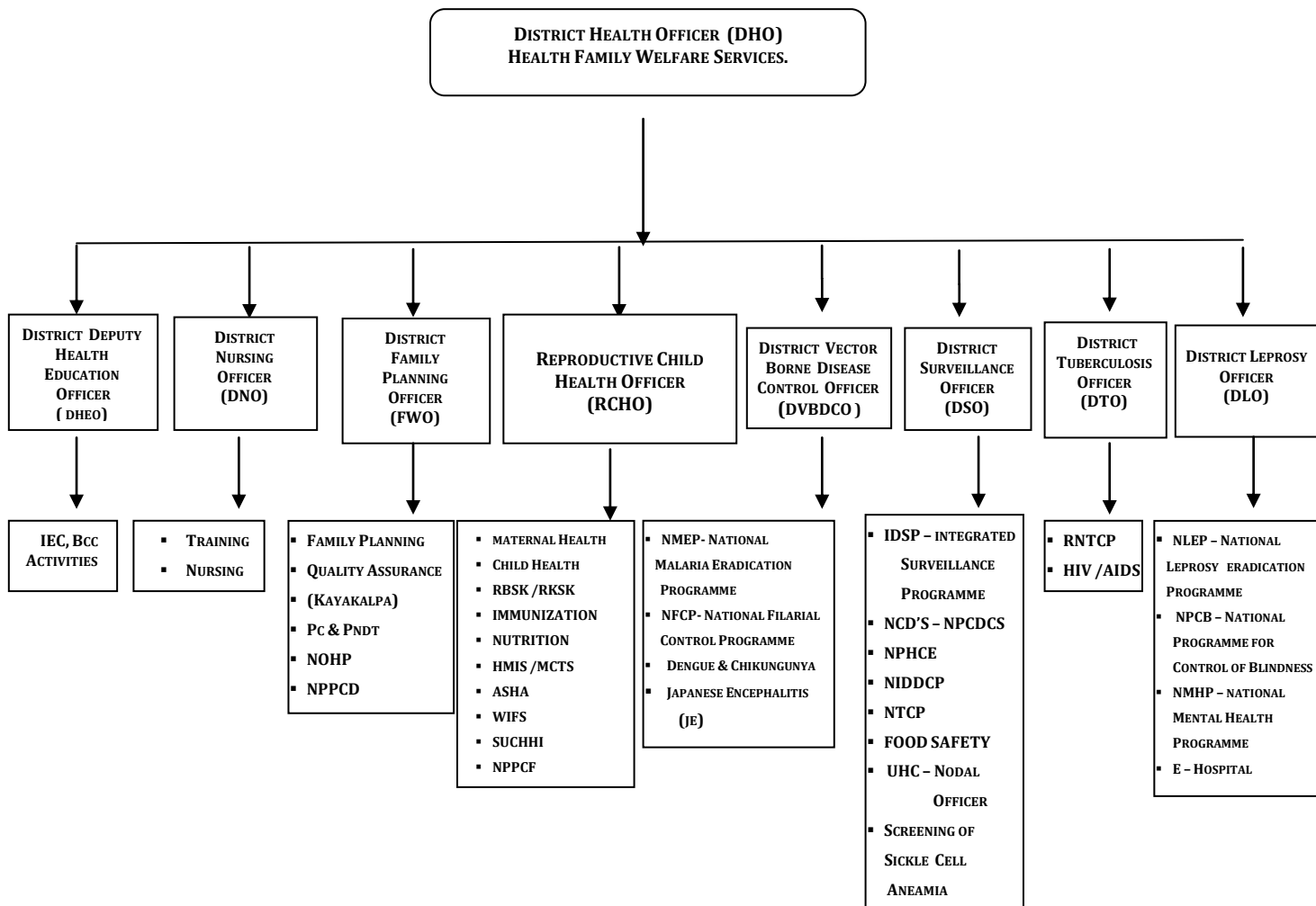


ORGANISATION CHART OF DIRECTORATE OF HEALTH & FAMILY WELFARE SERVICES



ORGANOGRAM CHART AT THE DISTRICT LEVEL OF DIRECTORATE OF

HEALTH & FAMILY WELFARE SERVICES



NOTE :

- In addition to the above, the District Programme Officers are nominated as Nodal Officers for each Taluka's for effective and Periodic Monitoring and Review.
- As per the GOI guidelines, the Organogram envisages to create Programme Officer post which is uniform across the Nation and is similar to the current wings present in the Ministry of Health and Family Welfare, GOI. Government of India recommends in addition to the existing posts the creation of 15 posts for the effective monitoring vide circular Of Ministry of Health and Family Welfare, Nirman Bhavan, New Delhi No. Z. 14012 /1 2013 Dated : 2nd June, 2014 .

**STATE PROGRAMME MANAGER,
NHM**

DIRECTORATE OF HEALTH & FAMILY WELFARE SERVICES

ORGANOGRAM CHART AT THE DISTRICT LEVEL / TALUKA AND PHC LEVELS

